

AHD DVR Series

Full HD recording & display



DVR

- 1080p / 720p / 960H compatible
- 1080p recording
- Audio support
- Fast forward and backward playback up to 256 times
- Multi level user management (admin and 100 users account)
- HDD stability monitoring using S.M.A.R.T. function
- e-SATA Support
- 6TB HDD support
- Easy DDNS using your own domain name or MAC address
- Dual network video stream (H.264)
- Remote DVR monitoring function
- Easy network setup using UPnP

Remote S/W (CMS)

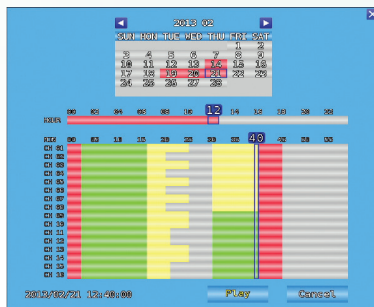
- Mac & Windows 100% compatible CMS
- Support maximum 256 channels
- All operations are integrated in one CMS
 - 960H, 720p, 1080p, HD-SDI
 - live, search, playback, backup, e-map, remote DVR configuration
- Supports two live mode for single or multi DVR
- Convenient remote DVR access using group and DVR list management
- Fast and easy remote DVR search
- More than two CMS can be operated on dual monitor

Mobile

- iPhone, iPad, Android support
- 16 channel live monitoring & playback
- Audio support
- PTZ control
- Remote DVR relay control
- Landscape or portrait mode support

Specification (ME5200/ME5300)

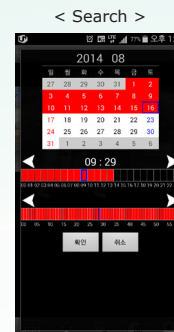
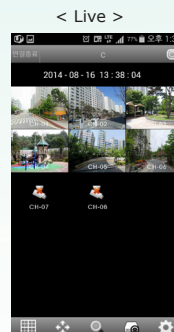
Item		ME5204	ME5304	ME5208	ME5216
Video input	No. of channel	4ch BNC	4ch BNC	8ch BNC	16ch BNC
Video output	Monitor	1ch HD output, 1ch VGA			
Multitasking		Quadplex			
Recording	Resolution	1920x1080, 1920x540, 960x540, 1280x720, 1280x360, 640x360, 960x480, 960x240, 480x240 (NTSC) 1920x1080, 1920x540, 960x540, 1280x720, 1280x360, 640x360, 960x576, 960x288, 480x288 (PAL)			
	Max. speed	60fps at 1080P (NTSC) 50fps at 1080P (PAL)	120fps at 1080P (NTSC) 100fps at 1080P (PAL)	120fps at 1080P (NTSC) 100fps at 1080P (PAL)	240fps at 1080P (NTSC) 200fps at 1080P (PAL)
	Mode	Schedule, Event(Sensor, Motion Detection), Manual, Continuous, Continuous+Event			
Display	Resolution	1024*768, 1280*720, 1280*1024, 1440*900, 1920*1080			
Search	Mode	Quick, Calendar, Bookmark, Event (Sensor, Motion Detection), USB			
Playback	Speed	x1,x2,x4,x8,x16,x32,x64,x128,x256,field by field (forward, backward) x1/4, x1/2 Slow Motion (forward only), repeat A-B			
Audio Input		4ch			2ch
Audio Output		1ch			
Sensor input		4 (NO/NC selectable)			
Alarm output(Relay)		1 Relay output			
Network	Speed & Type	10/100M (Static, DHCP, UPnP), E-mail, DDNS server available			
	Codec	Dual codec. (H.264)			
	Bandwidth limit	Yes			
Storage	SATA	Internal HDD 2EA or Internal HDD 1EA + e-SATA 1EA			
	e-SATA				
Backup		USB flash memory, network			
Password protection		1 admin + 100 users			
Interface	PTZ control	RS-485			
S/W upgrade		Network, USB flash memory			
Power source & consumption		+12VDC/4A adaptor (100 -240VAC, 50Hz/60Hz, 60W)			
Dimension (mm)		320(W) x 330(D) x 70(H)			



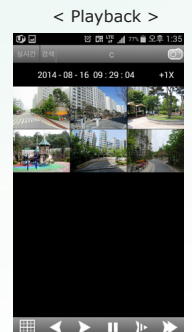
< Search >



< CMS >



< Mobile >



< 4ch >



< 8ch >



< 16ch >